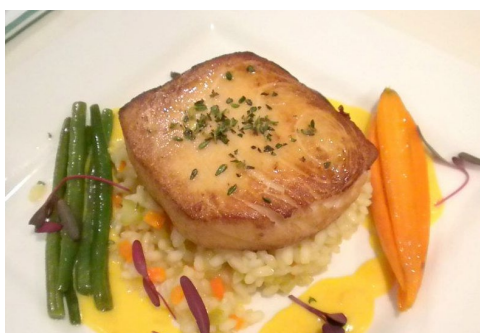




723 TALAMORE DRIVE
AMBLER, PA 19002
216.641.1300
WWW.TALAMOREPA.COM
TALAFFAIRS@TALAMOREFAMILY.COM



Betty the Caterer is a full-service off-premise Kosher caterer serving the Philadelphia area, central and southern New Jersey, Delaware, Baltimore and Washington, DC. Established in the last 1950's by Berry and Burt Olster, the Betty the Caterer tradition continues with their son Peter. Some clients go back three generations!



For more than 50 years, Betty the Caterer has remained synonymous with fine Kosher Catering. Menus are custom-designed with the most innovative Kosher food in the tristate area, food presentations are fabulous and each client receives attentive, personalized attention. You can rest assured that there are no "cookie cutter" parties with Betty the Caterer!



Excellent service is also a tradition with Betty the Caterer, employing some of the best headwaiters, captains, waiters and bartenders available in the tri-state area. In fact, many headwaiters average 20 years of service. A wide variety of fine table linens, fine china, silverware and stemware is available, as well as a selection of silver, gold and china base plates to make the perfect guest table.

Attention to detail is what clients have come to expect from Betty the Caterer. Whether you are planning an elegant dinner party, a lavish cocktail party or dinner gala for 500 guests, Betty the Caterer is the perfect Kosher catering choice.

www.BettyTheCaterer.com
(215) 224-8400