

Membership Information



TALAMORE
FAMILY OF CLUBS



Welcome to the Talamore & Applecross Family...

A Distinctive Way of Life

The Talamore Family consists of four clubs, two in Pinehurst, North Carolina and two in Pennsylvania. Yes, you enjoy seamless privileges at all four Clubs creating value for your Membership that is unique to the country club world. Membership with Talamore has and will always be a distinctive “Way of Life” that we are continually looking to enhance based upon the feedback and involvement of our Members.

We feel the service provided our Members and Guests is what defines The Talamore Family and makes us different from other private Clubs. Our company motto is “Exceeding all Expectations.”

Everyone who walks in our doors has different expectations and it is important that we learn the personal and practical needs of all who visit Talamore. Our staff strives to always be proactive and



leaves no stone unturned to provide you an exceptional Club experience; it is that pride of ownership that will ensure The Talamore Family’s success, future, and reputation.

Welcome to our Talamore Family and we appreciate your decision to be part of our club – now your club. Now you can relax and enjoy your new “Way of Life” while we take care of your daily Club needs.



Ray Sowden
Talamore Country Club

John Harte
Applecross Country Club

Matt Hausser
Talamore Golf Resort
& Mid South Club

AND THERE'S MORE...

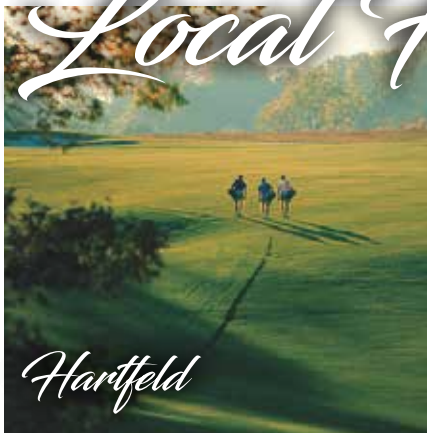
Talamore & Applecross have established a new relationship with the ClubCorp organization and their Membership program called "My Community Clubs" This special program provides our Members* privileges at hundreds of private Clubs in the Philadelphia area and across the country. An additional benefit of the program is a tremendous concierge benefit for tickets to sporting, theater and concerts all over the country. It is considered an upgrade to your current privileges and will greatly enhance your overall Membership experience. This program was founded by ClubCorp, the worldwide leader in Private Clubs with over 300 premier Clubs.

ALSO...

- The Best Seats
- World Renowned Events
- VIP restaurant reservations & other special dining benefits
- When travelling enjoy access, including golf, to private country clubs, fitness studios, spas and city & business clubs throughout the United States
- Concierge reservations and bookings at Premier Hotels including the Ritz Carlton

We are extremely excited about this amazing opportunity and benefit and look forward to 2018 and your enjoyment all the benefits of your expanded Membership.

Local Favorites



PLUS SPECTACULAR ADDITIONAL MEMBER BENEFITS & PRIVILEGES



...JUST TO NAME A FEW!

PENNSYLVANIA CLUB CONTACTS

TALAMORE COUNTRY CLUB

Raymond E. Sowden, Jr.
General Manager
215-641-1300 ext. 102
Ray.Sowden@talamorefamily.com

Andy Watters
Head Golf Professional
215-641-1300 ext. 113
Andy.Watters@talamorefamily.com

Lou Guzzi
Director of Golf Instruction
215-901-7192
henybogan@pga.com

John Miller
Assistant General Manager
215-641-1300 ext. 125
John.Miller@talamorefamily.com

John Bryers
Director of Membership Sales
267-464-6552
John.Bryers@talamorefamily.com

Andrea Bradley, Karen Ferry & Mark McCool
Member Banquet Sales & Information
215-641-1300, option 2
talaffair@comcast.net

APPLECROSS COUNTRY CLUB

John Harte
General Manager
484-692-1010 ext. 102
john.harte@applecrosscc.com

Peter Lovenguth
Head Golf Professional
484-692-1010 ext. 103??
Peter.Lovenguth@applecross.com

Eric MacCluen
Director of Golf Instruction
484-888-6611
Info@ericmaccluengolf.com

Cindie Bartholomew
Food & Beverage Director
484-692-1010 ext. 111
Cindie.Bartholomew@applecrosscc.com

Steve Natalie
Director of Membership Sales
484-692-1010, ext. 110
Steve@applecrosscc.com

Tyler Lorditch
Fitness & Pool Manager
484-692-1010 ext. 109
Tyler@applecrosscc.com

NORTH CAROLINA CLUB CONTACTS

Matt Hausser
PGA General Manager
910-692-5884 ext. 25
Matt@talamore.com

Dean Allgeyer
Director of Golf
910-695-3193 ext. 20
Dean@talamore.com

Kim Strange
Talamore Properties
910-315-9995
Property@talamore.com

Tag Leon
*PGA Head Golf Professional
& Membership Director*
910-692-5884 ext. 1
Tag@talamore.com

Nikki Conforti
Golf Vacations Specialist
800-552-6292
Nikki@talamore.com

Christian Oliver
Director of Accommodations
910-692-5884 ext. 21
Christian@talamore.com



TABLE OF CONTENTS

1-2	Welcome to The Talamore Family of Clubs & Club Corp Information
3	Club Contacts
5-6	Talamore and Applecross Multi-Club Membership Plans
7-8	“Applecross Country Club” <i>Chester County Life Magazine</i>
9-10	Golf Courses
11-12	Lou Guzzi: 2013 PGA Teacher of the Year
13	Golf Instruction at Applecross
14	“The Talamore Experience” <i>Golfstyles Magazine</i>
15	Member Events
16	Club Amenities
17-18	Club Dining
19-20	“The Village of Pinehurst” <i>Tri-State Golfer</i>
21-25	Q&A
26	Member Referrals
27-28	“Talamore Remastered” <i>Tri-State Golfer</i>
29	Real Estate
30	“The King’s Mid South Gets a Champion Green Makeover” <i>Tri-State Golfer</i>

This booklet does not constitute an offering for Membership. Please see Membership Director for full details and pricing for Membership. Membership subject to completion and acceptance of Club’s application and offering.



TALAMORE AND APPLECROSS MULTI-CLUB MEMBERSHIP PLANS

For current rate information, contact either of our Membership Directors. All Memberships feature seamless privileges within The Talamore Family of Clubs Network, based on your selected category of Membership and no assessments.

Membership plans and descriptions herein are for Talamore PA and Applecross based Memberships. The Talamore Golf Resort and Mid South Club have a separate Membership Offering for their residents. More information for Talamore NC and Mid South is available through our NC Real Estate Office or through the NC Clubs' General Manager.

FULL GOLF MEMBERSHIPS

Full Golf Membership features three programs with **Unlimited Golf** without the payment of green fees, access to Club Dining, Social Events, Golf Events and more. **Amenities such as Pool(s), Tennis and Fitness may be added.**

Available for ages 22+

- **Tier I** – Unlimited Golf, no tee time restrictions.
- **Tier II** - Unlimited Golf weekdays anytime, after 11:30am weekends & holidays
- **Tier III** – Unlimited Golf weekdays (Tue-Fri All Day, after 4:00pm weekends & holidays)

JUNIOR MEMBERSHIP (under age 21)

YOUNG PROFESSIONAL MEMBERSHIP (ages 22-30)

INTERMEDIATE MEMBERSHIP (ages 31-40)

TRADITIONAL CLUB MEMBERSHIP (ages 41-55)

SENIOR MEMBERSHIP (ages 56-64)

SUPER SENIOR MEMBERSHIP (65+)

SPOUSES AND CHILDREN OF FULL GOLF MEMBERS

- Spouse add-ons are available with all our Full Golf Membership Programs
- Talamore & Applecross have NO TEE TIME RESTRICTIONS FOR SPOUSES
- Spouse golfers receive the same tee time access as the primary golfer named on the Membership.
- Children of Full Golf Members may be added for unlimited golf privileges. Children golfers receive the same tee time access as the primary golfer named on the Membership. Cart fees required during certain times.

PAYMENT PLANS & INCENTIVES FOR FULL GOLF MEMBERSHIP

- Payment Plans available for the Refundable Membership Deposit or Initiation Fee
- Incentives also available for payment of Membership Deposit or Initiation Fee in full or within 12 months.



TALAMORE AND APPLECROSS MULTI-CLUB MEMBERSHIP PLANS

SOCIAL MEMBERSHIPS

P=Pool

T=Tennis

F=Fitness

D=Club Dining & Social Events

G6=6 Rounds Annually

G8=8 Rounds Annually

TIER I: SOCIAL MEMBERSHIP › P T F D

Pool(s), Tennis, Fitness, Club Dining and Social Events. Fees vary based on home course designation. For Non Residents of the Talamore or Applecross communities.

TIER II: ASSOCIATE / SOCIAL MEMBERSHIP › P T F D G12

Pool(s), Tennis, Fitness, Club Dining and Social Events, PLUS 12 Rounds of Golf annually. Cart fees applicable and based on Club Membership guidelines. For Non Residents of the Talamore or Applecross communities.

ASSOCIATE GOLF › D G8

Club Dining and Social Events, PLUS 8 Rounds of Golf annually. For Non Residents of the Talamore or Applecross communities.

CLUB II › D G6

Already a Full Golf Member of an authorized GAP Club? See our Membership Director for special plans. Available only with Applecross or Talamore home course designation. For Non Residents of the Talamore or Applecross communities.

TALAMORE AND APPLECROSS RESIDENT SOCIAL MEMBERSHIP › P T F D G6

Pool(s), Tennis, Fitness, Club Dining and Social Events, PLUS 6 Rounds of Golf annually with the payment of a Social Cart Fee. Residents may purchase an additional 6 rounds of golf annually.



Miscellaneous Required Fees based on Full Golf or Social Plan Designation

- – All Full Golf Members
- – All Full Golf and Non Resident Members
- – All Full Golf Members. Optional for Social Members
- are optional

Miscellaneous Notes

- There are for Members in The Talamore Family Network
- See Club Rules and Regulations for individual property dress code and other specifics
- Dues and other advance fees for services are nonrefundable
- Your home course designation is determined by the course to which you live closest

Applecross COUNTRY CLUB

*Excerpts Courtesy of
Chester County Life Magazine*

This past summer, Members took pleasure in the opportunity to share in the groundbreaking ceremonies of Applecross Country Club's impressive new facilities. Since the club's opening a few years ago, a large and comfortable temporary clubhouse has served the dining and entertainment needs of Members. The new Applecross Clubhouse facilities add a major touch to an already exceptional venue of club facilities and amenities.

NEW GOLF CLUBHOUSE!



The new Applecross Clubhouse facilities mark a major milestone – the finishing, crowning touch on an already exceptional venue of club facilities & amenities. Shown is a rendering of the new Clubhouse facing a panoramic, up-close view of the 18th & 19th holes.

Member facilities at Applecross include the only Nicklaus Design® golf course in the Philadelphia area, an outdoor resort-style swimming pool, a year-round indoor pool, tennis courts, a 10,000 square foot fitness center. The Club features a wide variety of group fitness and wellness classes, Spin Bike classes, private and group tennis lessons, state-of-the-art golf instruction center, exceptional junior golf programs, a host of club-sponsored tournaments and entertainment events, and a variety of Membership plans for every lifestyle and budget.



PROGRESSIVE & INNOVATIVE

As many of us well know, the Philadelphia region showcases some of the finest country clubs in the U.S. What separates or distinguishes Applecross Country Club? The club relishes its exceedingly progressive and innovative status.

To remain viable and relevant, the typical or standard strategic response of traditional clubs has been essentially a focus on implementing a family-friendly, more inclusive model, where the club revolves around the needs of all family Members, and not just those of one or two individuals. A true and complete conversion or transition to the family-friendly model has been slow and tedious for a number of clubs, attributed

largely to the dynamic that traditional clubs are encumbered by a tradition of exclusion and a natural resistance to change as Membership demographics evolve gradually. And too, from the financial side, the investment required to make the necessary structural changes to facilities and operations is substantial for clubs.

Applecross Country Club is in an enviable position. The club is not encumbered by tradition and resistance to change. It's a new, modern, state-of-the-art club, with a charter and mission specifically designed to be diverse, inclusive, and family-oriented from its very beginning. All of the club's exceptional facilities, operations, amenities, programs and professional management work in harmony to fit the needs of today's family lifestyles.

CHESTER COUNTY'S MOST
PROGRESSIVE & INNOVATIVE
COUNTRY CLUB



Applecross features an outdoor resort-style swimming pool (pictured) and a year-round indoor pool adjacent to the pool pictured.

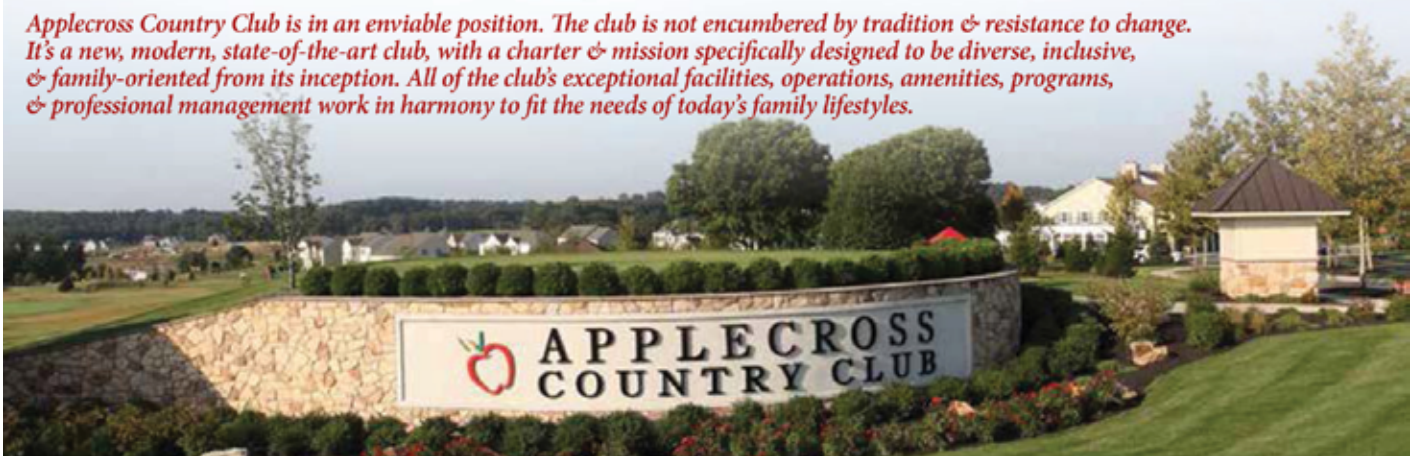
HIGHLIGHTS OF THE NEW GOLF CLUBHOUSE

Well in advance of groundbreaking, Applecross invested considerable time and effort in planning and designing the new clubhouse facilities to meet Member needs. Justin Meyers explains, "Our Membership is diverse, comprised of serious golfers, recreational golfers, family golfers, and non-golfers. We began the design process by identifying and analyzing the current and future needs of our diverse Membership. Once accomplished, our design team went to work."

To pull the project together, Project Manager Chris Yates of Innovative Building & Remodeling was joined by Andrew Scheerer of Exton based Structural Design Associates and Mid Atlantic Timber Frame of Lancaster. "We went through a number of design iterations before achieving the desired character, operational flow, and overall feel we wanted to achieve. While our clubhouse design says it's a serious club, it also clearly says it's a fun place for all to enjoy. When completed, Members will be very proud and will have more fun and enjoyment than ever before with their fellow Members, as well as the entertainment of their guests," said Chris.

For golfers, the new Golf Clubhouse provides an outstanding array of facilities and amenities on three convenient levels. All three levels work in great harmony to make the golf experience extraordinary before and after each and every round. The main level is the new spacious home of the Applecross Pro Shop, the heart and soul of the Golf Clubhouse, and Head Golf Professional Tommy Moore, PGA, and his professional staff. In addition to merchandising and servicing just about everything you need for your game, the pro shop's perimeter features a deck for that all important panoramic, up-close view of the 18th and 19th holes. On the ground level, golfers are welcomed by the engaging comfort and leading-edge conveniences of the Men's and Ladies' Locker Rooms. On the top, third level, resides the grandeur of The Eagle's Nest. This adult only lounge features the services and amenities of a full service bar and bar menu, and a covered deck with a wonderful view of holes 18 and 19 (and peeks at a few others) and magnificent vistas of the rolling hills and charm of Chester County.

Applecross Country Club is in an enviable position. The club is not encumbered by tradition & resistance to change. It's a new, modern, state-of-the-art club, with a charter & mission specifically designed to be diverse, inclusive, & family-oriented from its inception. All of the club's exceptional facilities, operations, amenities, programs, & professional management work in harmony to fit the needs of today's family lifestyles.



170A ZYNN RD. • DOWNINGTOWN, PA 19335
484.645.2471 • APPLECROSSCC.COM • GREGG@APPLECROSSCC.COM

GOLF COURSES



Talamore Country Club in Ambler features 18 exciting holes designed in the Low Country feel of the Carolinas. Wetlands or water grace 16 of the 18 holes, and five sets of tees provide golfers of all abilities a fun and unique challenge. Talamore's USGA bentgrass greens are always ranked amongst the top in the area for conditioning. Talamore was named as one of the Top 25 Courses in the State and also one of the Top New Courses in the Country when it opened in 1995. "Rave Reviews" and "Must Experience" have graced the headlines for this truly one-of-a-kind gem in the heart of Montgomery County.



Applecross Country Club is the first and only Nicklaus Design golf course in the Philadelphia area. The design goal of the course was to create an exciting, challenging and most of all a fun golf experience for golfers of all skill levels. The rolling terrain, manicured fairways, native wetlands and timeless Chester County countryside combine for a golfing experience unique to the surrounding area.

The course features a variety of shot making opportunities for the scratch golfer as well as generous fairways and landing zones for the beginners. Applecross' USGA Bentgrass greens, tees and fairways, and the state-of-the-art Sub Air Greens circulation system registers high marks amongst its peers for conditioning and playing conditions.



Rees Jones, Inc.
GOLF COURSE DESIGN

Talamore Golf Resort in Pinehurst, North Carolina feature 18 holes of championship golf designed by Rees Jones. With 4-½ stars from Golf Digest, Talamore Resort is a great way for our Pennsylvania Members to enjoy an amazing vacation and experience all the benefits of Membership at their home-away-from-home. Multiple on-site lodging options, include spacious Villas and new, luxurious Mid South Lodges.



A Private Golfing Retreat...Located just minutes from the historic village of Village of Pinehurst, North Carolina, the Mid South Club is one of the Carolinas' most attractive private residential golf communities. Five hundred forty five acres of longleaf pine forests, lakes and gently rolling hillsides provide a backdrop for a place of beauty and serenity. The Arnold Palmer signature golf course offers it's members a challenging yet enjoyable championship layout on which to test their skills.



Hartefeld National, a Premier Delaware Valley Golf Club, features a spectacular 18 hole Tom Fazio masterpiece and one of the area's most extensive all grass practice facility. Here you'll enjoy award winning golf & dining, instruction and lessons at the Academy of Golf, elegant banquet rooms and a regional favorite for cocktails and live entertainment. Access available through Club Corp Network.



Located near historic Princeton, Bedens Brook meanders through the beautiful pastoral setting of **Cherry Valley Country Club**. Here, there is something for everyone: a golf course by Rees Jones, premier tennis, swimming and more. Access available through Club Corp Network.



LOU GUZZI

2013 PGA TEACHER OF THE YEAR



The PGA National Teacher of the Year Award was inaugurated in 1986 to honor outstanding teachers of golf among the ranks of The PGA of America Membership. This Award is based on the professional's overall performance in teaching; unusual, innovative and special teaching programs the professional has initiated or played a key role in implementing; articles published in books and magazines; as well as outstanding golfers the professional has instructed. Lou is the first Philadelphia PGA Professional to be named PGA Teacher of the Year.



**We are proud & excited
to announce that
Talamore's Lou Guzzi
has been named
NATIONAL PGA
TEACHER OF THE
YEAR!!**

Lou is no stranger to accolades for his teaching prowess. Other awards on Lou's Wall of Fame include:

- GOLF Magazines Top 100 Teachers in America
- Two Time Philadelphia Section PGA "Teacher of the Year"
- Golf Range Association of Americas "Top 50 Growth of the Game Teaching Professionals"
- Golf Digest "Best Teachers in State" for PA
- www.Golf.com ongoing presence with "Lou's Lab"
- PGA Membership in 1997
- Advisory Board Member
- Top 50 Growth of the Game Teaching Professional of the Golf Range Association of America and the PGA Magazine Advisory Board: Instruction
- He is the director of instruction for the Golf Talk Live Radio Show and Inside Golf TV Show on Comcast Sports Net

Lou began his love for golf as a youth, designing a makeshift course near his family home. Lou's first experience on a golf course came at age 17, when he and his future wife had a date to play 18 holes at Twining Valley Golf Club in Dresher, Pa. He turned professional in 1991, but had been giving golf lessons as an amateur long before entering the golf industry.

Today, Lou's extensive student base features PGA Professionals, many of the highest-ranked junior tournament players in Pennsylvania, and many adult players who have won club championships.

Award Winning

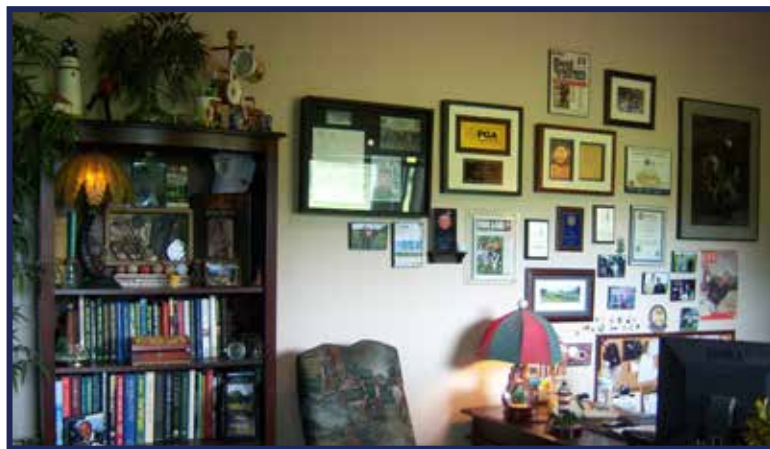


Lou's teaching center is all about golf and is a living breathing example of what one man can do to give back to the game which he loves so much. He wanted to teach so bad in the winter time that he put a Wood Burning Stove in the teaching building to keep it warm for our students to learn. Quite simply you would be hard pressed to find a more well-rounded and down to earth individual, golf instructor and PGA professional than Lou.

Lessons by Lou and his staff are given at the state-of-the-art Teaching Center which opens out onto the Talamore range and has special areas for video golf instruction and, based on weather, full indoor teaching capabilities.



The Lou Guzzi Golf Academy & Talamore Country Club have a serious yet simple mission with their golf instruction; to make the golf experience the best it can possibly be by providing each student with solid fundamentals that have been proven to stand the test of time by the greatest players in the world. Whether it's the full swing, putting, chipping, bunker play or course management, golf lessons with Lou are fun and easy to understand.



To see the entire library of Lou's video lessons visit www.LouGuzzi.com or for some real entertainment, golf knowledge and maybe a chuckle or two go to Lou Guzzi on www.Golf.com



**CONGRATULATIONS TO LOU FROM ALL OF THE
TALAMORE FAMILY STAFF AND MEMBERS!**

GOLF INSTRUCTION AT APPLECROSS

DIRECTOR OF INSTRUCTION – ERIC MACCLUEN

Voted One of PA's Best Teachers by Golf Digest



Applecross is proud to feature the talents of PGA Professional and Philadelphia's PGA Section Teacher of the Year, Eric MacCluen, as Director of Instruction at its state-of-the-art year-round teaching facilities. Junior golf camps, private instruction, corporate team building and on-course lessons.



Eric MacCluen and his team of teaching professionals are available for a variety of private and group golf lessons for Members and non-members, year-round. Eric's love for the game motivates him to not only refine the techniques of highly skilled players, but also to teach the proper basics of golf to beginners. His passion for junior golf has resulted in college scholarships for more than 100 students and his numerous camps have allowed children as young as 4 years of age to have fun as they are taught new skills.

Visit www.EricMacCluenGolf.com for information on group and private instruction, on-course lessons, junior golf camps and corporate team building.



ERIC'S ACCOMPLISHMENTS

- NCAA All American at Greensboro College
- N. C. State University graduate with a Bachelor's in Communications
- PGA Member since 1994
- Director of Instruction at Hartefeld National Golf Club in Avondale, PA from 1994 - 2000
- Owner of the Eric MacCluen Golf Academy from 2000 - 2011
- Director of Instruction at Applecross Country Club in Downingtown, PA and current owner of Eric MacCluen Golf from 2011-2015
- Over 100 students have received college scholarships and many national tournament wins
- 1998 Philadelphia Section PGA Junior Golf Leader Award for outstanding work with our nation's youth
- 1999 D.S.G.A. annual award for his contributions to the future of the game
- 2002 PGA Philadelphia Section Teacher of the Year Award for making a significant impact on the game
- 2004, 2005 and 2007 "Top 50 Kids Teacher" in America by the U.S. Kids Golf Company
- 2008 "Top 50 Master Kids Teacher" in America by the U.S. Kids Golf Company
- 2011/ 2012 voted one of Pennsylvania's Best Teachers by Golf Digest Magazine
- Junior Golf Development Award for 2014



Bringing girls to the game of golf.



GOLFSTYLES



MID SOUTH CLUBHOUSE

THE TALAMORE EXPERIENCE

Talamore Golf Resort in the North Carolina Sandhills is a place you can go time after time and never tire of it, which makes it a great place for an annual golf trip or to be a member. You get hooked on the excellence of the two courses, the luxury of the accommodations, the prime location in the most historic place in American golf, and the access you get to other great courses of the region.

The Rees Jones (Resort Course) and Arnold Palmer (Mid South) designs are what lure you the first time, but it's the quality of everything else that keeps you coming back. The Talamore experience began in the early 1990s when Jones routed a beefy 7,020-yard, par-71 that plays through towering longleaf pines and features 180-feet in elevation change. It is still considered one of the Sandhills' best.

"I don't want to take the driver out of the golfer's hands," says Jones, "but I want him to have to think

about whether he wants to use it."

Across the street from the Resort Course, the Members Course at Mid South Club was built as a private club and later acquired by the resort in 2004 to create a dynamic multi-course resort experience among the best in the Sandhills. Mid South is one of the Sandhills' best

designs, lined by towering pines and playing through an upscale community.

The Talamore and Mid South union along with access to over 30 other renowned courses in the area including Pinchurst No. 8 by Tom Fazio, the Dormie Club by Coore-Crenshaw, Jack Nicklaus's signature course at The National and many great historic layouts by Donald Ross, including Pine Needles, provides the perfect golf destination for those looking to getaway and play in the famed Sandhills. ■

TALAMORE RESORT
Southern Pines, N.C.
910.692.5884
talamoregolfresort.com

MEMBER EVENTS

Applecross Country Club



1 Day Member/Guest Tournament
 2 Person Alternate Shot
 Adult-Junior Tournament
 Brunch with Santa
 Closing Day Tournament
 Club Championship
 Cookies with Santa
 Craft Show
 Derby Day
 Easter Brunch
 Easter Egg Hunt
 End of the year Awards Ceremony
 Fall Festival
 Garage Sale
 Halloween Party
 Island Bash
 Labor Day Pool Extravaganza
 Labor Day Tournament
 Ladies 1 Day Member/Guest Tournament
 Mardi Gras
 Memorial Day Pool Bash
 Memorial Day Tournament
 Men's League
 Men's Member/Guest Tournament
 Men's Member/Member Tournament
 Mixed Couples Event
 Mixed Couples Glow Ball Event
 Mother's Day Brunch
 New Years Eve Gala
 Opening Day Tournament
 Red, White, Blue Tournament
 Rotten Apple Tournament
 Ryder Cup
 Swing into Spring
 Weekend Juniors
 Women's League
 Women's Member/Member Tournament
 Wounded Warrior's Tournament

Talamore Country Club



3 Jacks & a Jill
 Easter Brunch
 Black Friday Bingo
 Brunch with Santa
 Closing Day Scramble
 Club Championship
 Coverdale Cup
 Easter Brunch
 Fall Classic
 Flag Tournament
 Governor's Cup
 Holiday & Awards Banquet
 Labor Day Pool Extravaganza
 Labor Day (Open Member Play)
 LaSalle Invitational
 Leading Women Outing
 Member's Cup
 Member/Member
 Memorial Day Pool Bash
 Memorial Day (Open Member Play)
 Men's GAP (Challenge Match)
 Men's League
 Men's Member Guest
 Mixed Twilight
 Mother's Day Brunch
 Nite Golf (Dine then 9)
 Opening Day Scramble
 Pizza Night
 Presidents Cup (Finals Complete)
 Pumpkin Painting
 Quizzo
 ACC/TCC Ryder Cup
 Scarecrow Making
 Crab Night
 Sunday Juniors
 Swing Into Spring
 Thanksgiving Dinner
 The Greaseband
 Trunk-or-Treat
 Women's Member Guest
 Women's Wednesday



Talamore Resort and Mid South Club



4th of July Pool Party
 4th of July Scramble
 Birthday Social
 Bunco
 Cookie Decorating and Santa
 Guest Chef Night
 Ice Cream Social
 Jack and Jill Event
 Labor Day String Scramble
 Ladies Wine and 9
 Master's Social
 Members Monthly Social
 Member-Member
 Men's Member-Guest
 Memorial Day Scramble
 Memorial Day Pool Party
 New Year's Eve Dinner
 Nine & Dine

Old Pals
 Opening Day WGA
 Poker
 Pumpkin Painting
 Putt-Putt
 Rock Around the Clock
 Santa Claus Open
 Spring Fling
 Stag Night
 St. Patrick's Day

Sunday 9 and Dine
 Super Bowl Party
 Toys for Tots Week
 Trunk or Treat
 Ugly Sweater Party
 US Kids Week
 Valentine Sweet Social
 WGA Closing Day
 Women's Member/Guest

FITNESS, POOLS & TENNIS & MORE!

Talamore Country Club

Renowned for its free form resort ambiance, the Talamore Country Club pool area is a lushly landscaped tropical area with a waterfall, Jacuzzi, kiddie pool and large pool shaped to resemble a golf hole. The Talamore pool is open from Memorial Day to Labor Day. Talamore's amenities include a state-of-the-art 6,000 sq. ft. Fitness Center with the latest cardio and Cybex strength training equipment, poolside dining and two Hard Tru Tennis courts. Cardio theater, personal training and other group classes are available.



Applecross Country Club

The Grove Amenities at Applecross Country Club include a fully-equipped 10,000 sq. ft. Fitness Center with all the latest in treadmills, ellipticals, stationary bikes and more. A full circuit of Life Fitness strength training equipment is available for all muscle groups. Also at Applecross are exercise rooms for individual and group classes, lighted tennis courts, year-round indoor pool and Jacuzzi. Outdoor junior Olympic pool and kiddie splash pad are open from Memorial Day to Labor Day. **NEW** for 2018 are Shuffleboard, Pickleball, Basketball & GaGa!



Talamore Resort & Mid South Club

At our North Carolina Resort & Private Club we feature two outdoor pools and tennis. The Talamore resort is adjacent to Reservoir Park featuring a 95 acre recreation lake and more than two miles of walking trails and scenic lake front overlooks. Basketball and Pickleball **NEW** for 2018!



TALAMORE PA CLUB DINING



Talamore Country Club



Talamore features a turn of the century clubhouse that was once part of Governor McKean's Estate and Mansion. More than 30,000 square feet of Member Dining, Banquet and outdoor dining facilities are all decorated with the old world charm.

Bunker's Grill • Featuring cherry paneling, large screen TV's and a comfortable bar and seating, Bunker's Grill is a great Member's only dining choice for before or after the round. A cozy bar and comfy seating surrounded by nine flat screen TV's make this a true golfer's den.

Bogey's • A casual bar and grill awaits at Bogey's. With its unique exposed brick walls, spacious booth and table seating, and the bar adorned with Red Dragon Granite and mosaic tiles, Bogey's is as comfortable and inviting as it is unique.

La Cave • In the tradition of the timeless European wine cellars, La Cave features Member Wine Lockers, stone walls, intricate wood beams, booth seating, and a cozy atmosphere for casual or special dining. You'll feel like you were whisked away to a private wine grotto, complete with sunlight shining through a huge mural of Monet's 'Bridge at Giverny'.

McKean's • For family dining, it's McKean's! Named for Governor Thomas McKean who lived in the mansion on the grounds of Talamore at the turn of the century, McKean's is a family-friendly dining atmosphere, complete with an area just for kids where they can play Wii, Nintendo, Lego and even draw on the wall!. It's a great and unique mom, dad and kid-friendly environment!

Wii

Club 19 & Pool Dining • Overlooking the 18th hole is Club 19, a casual covered outdoor patio perfect for after round drinks and snacks. Our Resort Pool has a full service menu with fresh salads, sandwiches, entrée specials and lots of kid's favorites!

Special Events • Talamore Country Club is host to state-of-the-art conference and banquet facilities featuring the Conservatory Ballroom, a magnificent two-story metropolitan-style ballroom and indoor/outdoor garden pavilions.



APPLECROSS & TALAMORE NC CLUB DINING

Applecross Country Club • The Tri-Fecta of Member Dining!



Trego's • The Trego Clubhouse features a casual themed menu with a wide variety of fresh seasonal salads, sandwiches, and chef's special entrees. Dine in a relaxed friendly atmosphere of your choosing:

- Families - Our family pavilion features X-BOX, bean bag chairs and family style seating at large country tables.
- Bar & Grill – with booth seating, hi tops and large screen tv's
- Wine Bar with wine lockers, white table cloth dining
- Patio seating overlooking the 18th and 19th holes

Eagle's Nest • Perched hi atop our new Golf Clubhouse is the Eagle's Nest. An adults only environment with a 35 seat bar, lounge style seating, hi tops and a huge covered deck overlooking the 18th and 19 holes. Firepits available.

Oasis Pool Bar & Outside Grill • Poolside our members enjoy the Oasis, a 25 seat outdoor bar with tv's music and fresh grilling happening all summer!



Talamore Resort and Mid South Club

The Talamore Golf Resort has two Clubhouses, one at the Resort and one at Mid South Club. A Mixed Grille, covered and open-air Patios and the famous "Members only" Crow's Nest at Mid South Club all await our Members and their guests. Decorated with classic southern charm, each Clubhouse is comfortable and inviting. Talamore Golf Resort and Mid South Club have golf-related food and beverage facilities with a mix of snacks and sandwiches. Our Members enjoy a slate of catered social events including our renowned "Guest Chef Night" held monthly featuring the area's top chefs. Resort guests have a long list of excellent local restaurants to choose from, all just minutes from the Resort. These restaurants include the Ironwood Cafe, Deuces, Pine Crest Inn, Elliotts, Ashten's, Tripps, Magnolia Inn and TenYa.

IRONWOOD



Deuce

Beefeater's

EOL
ELLIOTTS
ON LINDEN



TRIPPS
RESTAURANT



TALAMORE IN THE VILLAGE OF PINEHURST

COVER STORY

TRI-S
GO L

THE VILLAGE OF PINEHURST

THE BEST OF BOTH WORLDS: LOCAL AND DESTINATION
GOLF IN ONE INCREDIBLE PACKAGE

Talamore Trumps Competition with Premier Multi-Club Package

By Nate Oxman, Staff Writer

Forgive Talamore members if it sounds like they're bragging as they reel off the countless amenities at their disposal. They can't help that their membership holds such high value and all they really want to do after all is tell you just what you've been missing.

There's the award-winning Talamore Country Club in Ambler with its championship golf course, one of the finest practice facilities in the tri-state area resort-style pool, state-of-the-art fitness center, Har-Tru tennis courts, and clubhouse mansion now offering four phenomenal, unique member dining areas, and then just 45 minutes away there's Applecross Country Club in Downingtown boasting the area's only Nicklaus Design, a practice facility rivaling its sister course's, the widely-acclaimed Grove Area with its own resort-style pool, a sports pavilion, and lighted tennis courts.

And then, with your jaw dropped and drool flowing freely, they'll tell you there's more.

In the heart of arguably the top golf destination in the United States stands the Talamore Golf Resort, a 36-hole golf retreat boasting two of the top venues in the entire Pinehurst, N.C. area

"Confidence, value and exceeding expectations are the cornerstones of

what we strive for every day," said Jon Hazelwood, General Manager at Talamore's flagship property in Ambler, Pa. "With two premier clubs in Pennsylvania linked at just 45 minutes apart, and two world-class destination clubs in Pinehurst, North Carolina, it is hard to find a more compelling membership value."

The Resort Course at Talamore is a Rees Jones design that was quickly named "Best New Course in the South" by Golf Digest when it opened in 1991. Not only does it offer an excellent shot maker's course that is carved out of the North Carolina Sandhills and features refreshing elevation changes, but thanks to the world-famous llama caddies, it also offers an unforgettable golf experience.

Jones's goal for Talamore was to put strategy, not length off the tee, in the forefront. While its length won't wear you down - Talamore stretches to 6,840 yards from the gold tees yet has four sets of tees to accommodate all - its ability to require the golfer to think his way around the course and use every shot in his or her arsenal shows that Jones undoubtedly succeeded.

Accuracy is essential from start to finish as both the fairways and greens, which are loaded with undulations, are well-guarded by bunkers and many



holes feature doglegs that will wreak havoc on wayward shots.

Highlights include the fabulous 201-yard par-3 second hole and its sinister set of bunkers protecting the front and right portions of the green and the par-3 fifth hole, which actually features two par 3s side by side, either of which could be in the rotation on a given day. Both greens are surrounded on all sides by bunkers, with the "left" version stretching to 184 yards and the "right" a more manageable 148.

A demanding set of finishing holes includes the 444-yard par-4 16th, a slight dogleg left with a fairway sliced into three sections that packs a major punch from the gold tees at 444 yards, but still requires two well-placed shots from the blue (428 yards), white (398) or green (370) to secure a par.

TATE FALL



The 426-yard 18th hole requires a tee shot over a lake to a fairway dotted with pot bunkers and then a lengthy approach into a green guarded by a gargantuan bunker to the left.

Conveniently located across the street from the Resort Course is Talamore's Mid South Club, an Arnold Palmer design that was ranked only behind the famed Pinehurst No. 2 on Pinehurst Magazine's list of the top-ranked golf courses in the Pinehurst area.

While the lone water hazard at Talamore is the aforementioned lake on the closing hole, the Mid South Club wows members and visitors alike with an array of daunting lakes and ponds.

These include a large lake guarding the dogleg on the risk-reward 401-yard par-4 second hole, another forcing an all-carry short- to mid-iron at the picturesque par-3 sixth, a pond planted in front of the green at the awe-inspiring 533-yard par-5 ninth hole, and a sizable hazard that makes hitting the peninsula fairway (the only safe miss off the tee is left where trees narrow the target even further) at the 398-yard par-4 16th a must before making another all-carry approach over water.

Water also is a main feature of the splendid 435-yard par-4 home hole, where a lake looms to the right of the fairway and in front of the green, forcing two final precise shots to avoid finishing with a big number.

Providing eye-popping views of the Resort Course as part of their exquisite accommodations, the

Talamore Golf Villas are an ideal place to rest and rejuvenate in between rounds. Visitors staying at the villas can take advantage of a full kitchen, washer/dryer, two bathrooms, spacious living room and dining room areas, daily maid service, access to the Talamore pool and cabana, and much more in these two- or three-bedroom condominiums.

For those looking for even more lavish lodging, the Lodges at Mid South houses 16 luxury condominiums, each of which offers 1,800 square feet of living space, including a full kitchen adorned with granite and stainless steel, a plasma TV, daily maid services, washer/dryer, queen size beds, front and rear porches, and, of course, breathtaking views of the Mid South Club.

While Talamore members receive full access to the expansive Talamore Golf Resort in addition to the three private facilities in the Philadelphia area, vacation packages to the resort are available to the public. These include access to both the Resort Course and the Mid South Club as well as more than 20 partner courses including the decorated



Pine Needles and Mid Pines, both highly-regarded Donald Ross designs which have hosted numerous USGA championships, Tobacco Road Golf Club, one of America's toughest courses, Dormie Club, North Carolina's only Coore/Crenshaw design, and Pinehurst Nos. 1, 3, 5 and 8.

Golfers throughout the tri-state area have listened to loyal Talamore members and are taking advantage of the Philadelphia area's premier multi-club membership network and its incredibly affordable array of membership programs. They'd like you to do the same.

More information about the Talamore

Family of Clubs can be found at

TALAMOREPA.COM

or by calling 215.641.1300



• *What does Talamore mean?*

The name Talamore is Gaelic for **'land of great value'**.

• *What does Applecross mean?*

The origin of the Applecross name comes from a peninsula off the West Coast of Scotland. This area, known for its peaceful landscape is a reflection of the pristine rolling hills of East Brandywine.

• *What makes The Talamore Family of Club so unique when compared to other Clubs?*

The most unique aspect of The Talamore Family of Clubs is our Seamless Multi-Club Membership. Because our Clubs have similar ownership interests, we are able to offer Chester County, PA, Montgomery County, PA, and Pinehurst, NC, a premier Membership opportunity. Members in the Talamore Family network have 100% reciprocity with each Club based on their category of Membership selected.*

World class golf and Club facilities grace each of our properties. Legendary golf designers including Nicklaus, Palmer, and Jones have each put their stamp on the Talamore courses. Coupled with state-of-the-art fitness centers, pools, tennis, walking trails, golf practice facilities and dining facilities, our facilities and services are unique and unparalleled.

We are firm believers that the great Country Clubs of the future will be measured by facility and Membership diversity coupled with management driven to provide "best in class" service. Servicing the needs of today's Club Member is an ever evolving and changing process. The old "one-size-fits-all" Country Club approach that the majority of the Club industry pursues simply does not fit today's Member and their lifestyle. We have the broadest and most diverse Membership coupled with the most modern facilities of any Club in the region.

And best of all...NO ASSESSMENTS!



• *What Membership privileges are available with the Talamore Clubs in Pinehurst, NC?*

Additional "seamless" Membership privileges are available at our Pinehurst, North Carolina Clubs. Two world class golf courses designed by Rees Jones and Arnold Palmer are accompanied by multiple on-site lodging options including spacious Villas and our new luxurious Lodges. Walking trails, tennis and two pools are also available.

• *Do I need to know a Member, be sponsored by a group of Members?*

No. Membership Applications are subject to review and approval by Club Management. Sponsorship by and or knowing a Member is not required. Our Membership Director can walk you through the details and application for Membership.

• *When are Dues required to be paid?*

Dues are payable at the time of application. Dues are billed annually with payment due by Dec 31st for the following year. Some Memberships may be pro-rated in their first year. Payment Plans are available, subject to an additional fee.

• *How am I billed for regular club charges such as food and beverage, cart fees, etc?*

Members maintain a credit card on file which is charged at the time of service. Members may change their credit card number at our Member portal. The Club also accepts cash or checks.

• *I am new to the area. Will I feel welcome if I do not know anyone at the Club?*

Absolutely. Our staff works every day to pair up different golfers so new Members can meet existing Members. Our active variety of golf and social events and club dining venues provide a warm and friendly atmosphere to meet other Members.

• *Are the Clubs in the Talamore Family network equity or non-equity clubs and what is the difference between an equity club and a non equity club?*

All Clubs in The Talamore Family Network are corporate-owned non-equity clubs. An equity club is owned by the Members, whereby it's Members are assessed for all capital improvements and revenue shortfalls. A non-equity club is typically owned by a corporation. Members are typically not assessed for capital improvements and/or revenue shortfalls at a non equity club.

• *Are there Assessments?*

No! Unlike other equity clubs, Clubs in The Talamore Family Network does not assess their Members.

• *Are there monthly food minimums?*

Talamore Country Club requires food and beverage minimums from each of its Non-Resident Social Members and Full Golf Members. Full Golf Members have a monthly requirement and Social and Casual Golf Members have an annual requirement. Talamore's minimums cover food, all types of beverages, tax and gratuity making it easier than a typical Country Club Minimum.

Applecross Full Golf and Non-Resident Social Members will be required to maintain annual food and beverage expenditures when permanent clubhouse facilities are provided. Until such time, no food and beverage minimums will be required.

Talamore Golf Resort does not require food and beverage minimums.

• *What type of Member events are planned for Social & Golf Members and are there special events or programs for kids?*

All our Clubs feature an active Social Calendar with Wine Dinners, Surf & Turf Night, a Luau, Chili Cook-Off, Pumpkin Painting, Scarecrow Stuffing, and special themed buffets for Thanksgiving, Mother's Day and Father's Day, and more!

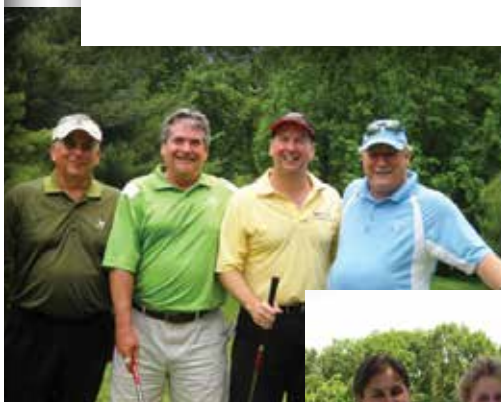
All year long each Club has specific kids-themed special events for Halloween, an Easter Egg Hunt, Brunch with Santa, and holiday pool activities including Moon Bounce, Face Painting, Balloon Experts and more.

• *What do Activity Fees cover?*

Activity Fees are paid by each Member and are used to subsidize golf and social events in the form of extra food and beverage and special entertainment.

• *Is there an Initiation Fee, Bond or other up-front fee required to join the Club?*

Non-Resident Social Memberships require a Non Refundable Initiation Fee. Full Golf Memberships require a Membership Deposit which may be fully refundable per Club guidelines and based on the payment plan selected. Full Golf Members may also elect to pay a lower Non Refundable Initiation Fee.



• *Is my Membership transferable?*

Resident-based Memberships are transferable to subsequent Homeowners within the community with the payment of a transfer fee. Non-Resident Social & Golf Memberships are not transferable.

• *Is there a committee of Members which meets with Club management?*

Yes. Clubs within The Talamore Family Network in many ways operate much like an equity Club with several Member Committees including a Social Committee, Golf Committee, Membership Committee, Golf Handicap Committee, Greens Committee and Advisory Board. Each Committee meets with Club Management on a periodic basis to provide Member feedback, plan events and in general help “steer” the Club.

• *Does the Club limit the number of Members?*

Yes. The number of Members in each category is limited based on the capacity of the facilities as judged by the Club. The Club offers multiple levels of Membership to give it the flexibility of better managing peak tee time and other facility usage periods.

• *How does the Club communicate with the Members regarding Club events and Club news?*

Our Clubs use e-mail extensively to inform the Membership, and Members are required to provide a current e-mail address for such purposes. Members will be able to access Club information through the Club’s proprietary Member Page located at www.TalamoreFamily.com that will provide Members with access to important up-to-date Club information and also allows for online tee time reservations. Fliers and other notices are also placed in various spots around the Club.



• *What is Management Philosophy that guides The Talamore Family of Clubs?*

We have a simple approach:

- *We have an extremely hands on management style.*
 - *We combine professional courtesies and service with a common sense business approach.*
- *We strive for as little bureaucracy as is necessary, so our Department Managers are empowered to make decisions and do the right thing for our Members.*
 - *Our Employees are the friendliest around.*
- *We push the envelope further than traditional country clubs to provide new and different ways of providing service to our Members.*
- *We are not infallible and do make mistakes. Our goal is to use our mistakes as a learning experience to grow and improve.*

Our Management and Staff are committed to delivering a first-rate Membership experience, whether it be on the links or through the varied social events and Club amenities. Where everyone knows your name and is always glad you came, filling your membership experience with lasting memories and new friends - that’s The Talamore Family of Clubs!

• *Are there Initiation Fees, Membership Deposits or Bonds*

- Full Golf Memberships require a Membership Deposit or Initiation Fee.
- Initiation fees are required for Social and Associate Golf Memberships.
- Resident-based Membership at Talamore Country Club and Applecross Country Club requires a Transfer Fee when the home is sold.
- There are no Bonds.

• *Is the Membership Deposit refundable?*

Yes, if the Membership Deposit is paid in full upon signing-up the Membership Deposit becomes refundable. If the deposit is paid through one of our long-term payment plans the Member must remain active until the full amount of the Membership Deposit is paid before the amount paid becomes refundable, per the terms and conditions in the Membership Offering.

• *Is the Initiation Fee refundable?*

No, Initiation Fees are non refundable.

• *Why do Clubs within The Talamore Family Network offer multiple tiers of Full Golf Membership?*

Weekend and holiday mornings are prime golf times. We believe strongly that a Club should limit the amount of Members who have access to those tee times.

• *Are the amenities optional for Non-Resident Full Golf Members?*

Yes. Non-Resident Full Members have an option to add Pool, Tennis and use of the Fitness Center on an annual basis for an individual or family. Each Club does reserve the right to restrict the number of Non-Resident Members that have access to its pool and amenity facilities.

• *Are Single and Family rates available?*

Yes. The Club offers different dues rates for single Members and for family Members of its Full Golf Membership programs.

• *What are the current guest rates and how many may each Member bring at one time?*

Golf Guest rates vary from \$50 - \$125 depending on season, day of week and accompanied vs. unaccompanied status. Guest restrictions range in terms of the number of accompanied guests and depending on the day of week, time of day and time of year. Please contact the Pro Shop to check current rates and availability.

• *How far in advance can Members make tee times?*

Full Golf Members may make tee times up to 14 days in advance and Social, Sports and Associate Members may make tee times up to 7 days in advance. Tee times for our Members at Talamore Golf Resort are made at the time of accommodations booking, provided on site accommodations are being utilized. Tee times may be made online at www.TalamoreFamily.com.

• *Is club fitting, club repair and lessons available for Members?*

Yes, club fitting, club repair and lessons are offered through our experienced, professional staff. We also offer special incentives at national and local golf retailers such as Golfsmith. Please contact our Pro Shop for additional information.



• *Are Pro Shops available at each Club?*

All of our Clubs feature full-service, well stocked Pro Shops with well-trained staff to meet member expectations for quality merchandising, as well as club fitting and equipment expertise. Some of our Pro Shops have been named as one of America's Top 100 Golf Shops!

• *What type of Member events are planned for the Golf Members?*

Each of the Talamore Clubs has more than 30 events annually for its Golf Members. Events are planned by the Club in conjunction with a committee of Members and are very diverse. There are separate men's and ladies' events, couples events, events for the family, parent and child, Member Guests, stag days and more. Additionally there are more than 30 social events each year at each of the Clubs. A slate of interclub golf events and activities are planned to bring the whole Talamore Family closer together!

• *Are Junior Golf Memberships and Programs available?*

Junior Golf Camps and Clinics are available at all our Clubs. Parents do not have to be Full Golf Members to be able to enroll their children in the Junior Golf Programs.

• *Are the Talamore Clubs involved with the Golf Association of Philadelphia (GAP)?*

Talamore and Applecross are proud members of the Golf Association of Philadelphia (GAP) and its men's and ladies' teams have enjoyed great success in regular league matches.

• *Are there Personal Trainers available in the Fitness Centers?*

Personal Trainers are available at each facility. Classes such as Pilates, Yoga and Aerobics are available throughout the year. Interesting and new classes are being added ALL the time!

• *How many life guards are on duty during Pool hours?*

For our Outdoor Pools in Pennsylvania, a lifeguard is on duty during peak pool hours. For our Indoor Pool at Applecross, a lifeguard is available during family designated times when the Outdoor Pool is not otherwise open. In North Carolina at Talamore Golf Resort, there are no lifeguards on duty.

• *What are the hours for the Pool and Fitness Center?*

Outdoor Pools - from Memorial Day to Labor Day. With some limited hours during the first 2 weeks in June.

Fitness Centers – open weekdays from 5am until 10pm with swipe card access. Weekend times may be limited.

Please see Club Membership Director for the individual Club's pool and fitness hours.

• *Can Members bring guests to the Pool? Is there any charge?*

Yes, Members may bring guests to the Pool. Weekday, weekend and holiday rates apply. The Club limits the number of guests per day at the Pool and also limits the number of times a guest may use the Pool during the season.

**Reciprocal seamless privileges for each category of Membership are subject to the Club's Rules and Regulations. Terms of reciprocity including tee time access, number of rounds annually, number of reciprocal rounds allowed at peak times, fees etc., and are subject to change, if required to preserve unfettered tee time access of "home course" Members.*



It's as easy as 1 - 2 - 3 - Free!

Refer a New Member...and you could be rewarded with Free Dues

REFER A NEW MEMBER IN A DIFFERENT CATEGORY OF MEMBERSHIP

If you refer a new Member in a **different** category of Membership, ie; a Tier I Full Golf refers a new Tier II or Tier III Full Golf Member, an Associate Golf or Social Member, then the referring Member will receive:

1. First Referred Member

10% of the annual billing for dues (including carts!) for the following Membership year

2. Second Referred Member

20% of the annual billing for dues (including carts!) for the following Membership year

3. Third Referred Member

30% of the annual billing for dues (including carts!) for the following Membership year.

REFER A NEW MEMBER IN YOUR SAME CATEGORY OF MEMBERSHIP

If you refer a new Member in your **same** category of Membership, ie; a Tier I Full Golf Member refers a new Tier I Full Golf Member, then the referring Member will receive:

1. First Referred Member

25% of the annual billing for dues (including carts!) for the following Membership year

2. Second Referred Member

50% of the annual billing for dues (including carts!) for the following Membership year

3. Third Referred Member

100% of the annual billing for dues (including carts!) for the following Membership year.
Yes, that's FREE DUES & CARTS in your Membership category for a full year.

General Notes:

- New Members must specify in their initial conversation with the club that they have been referred by an existing Member; the referring Member must be listed on the application or Membership.
- The sponsoring Member must notify the club in advance via e-mail that a call from a prospective Member will be forthcoming.
- Credits are applied to Dues, Carts and range fees. Food and beverage requirements and activity fees must still be paid.
- Rollover credits are not applicable for 3 or fewer referred Members Multiple referred. Member benefits are counted for in each calendar year.
- Rollovers ARE applicable for more referred Members in a single calendar year. Yes, if you refer more than 3 new members in your same category of Membership, we will rollover the additional referred Members and count them in the following Membership year towards your next rewards year.
- You may earn a combination of credits based on referring Members within your own category and on a different category.
- Referral Credits for any given year may not exceed the value of the dues, cart and range fees due by the referring Member.
- 2018 Renewal required for Referring Member to receive rewards.
- No cash payments provided under the Membership Referral program.
- Initial contact with the club must have been made as a result of the referral.
- Referrals are based on the original Membership purchased, not on Memberships that are upgraded.
- Referrals are provided for NEW non-resident Memberships only. Resident Full Member upgrades and or initial resident social activation does not apply. Prior Members returning to the Club also do not apply.
- The club reserves the right to make the final decision as to whether a new Member and existing Member qualify for the referral reward program.





BY INCORPORATING A CLASSIC SCOTTISH DESIGN ELEMENT, TALAMORE RESORT HAS REIMAGINED ITS REES JONES COURSE FOR THE RESORT'S 25TH ANNIVERSARY – AND NOTHING COULD BE FINER DOWN IN CAROLINA.



TO “REMASTER” IS TO ENHANCE THE quality of something already created. So how do you improve on a quarter century reputation of award-winning golf that was created by a renowned course architect, is located in the Pinehurst area - the most revered, historic golf location in the U.S., and has had the unique distinction of being the first and only club to offer llama caddies to its players?

The answer is both simple and quite complicated: You restore and reimagine the entire on-course experience. You create a “New Course”.

The Resort Course at Talamore in Village of Pinehurst/Southern Pines area of North Carolina was designed by Rees Jones and opened to instant acclaim in 1991. Twenty-five years later, the 6840-yard, par 71 layout is still a relevant and

very popular course, hosting vigorous year-round play by member, locals and Resort guests.

The goal of the 25th anniversary Re-mastering Plan was to reimagine the tract through a clever combination of restoration and rejuvenation projects that unlock the course’s hidden potential. The project was executed by a huge team including course superintendent David Walsh and his staff and PGA professional and General Manager Matt Hausser. Alongside the Resort’s staff were the skilled crews of Shapemasters, a world class certified Golf Course builder that has worked for nearly every major modern era golf course designer including Jack Nicklaus, Rees Jones, Arnold Palmer, Pete and PB Dye, Tom Fazio and Greg Norman www.shapemasters.com.



The “New Course” is “greener” literally and figuratively with less bunkers, wider landing areas, more bail out areas around greens and ultimately better turf conditions.

Quite simply the “New Course” at Talamore gets kudos and a green thumbs up from every angle.

UNIQUE CHALLENGES INTRODUCED

At Talamore, “Scotland and the NC Sandhills Collide” with the addition of 12 strategically placed, old-world style sod wall bunkers. Talamore

is the only course in the Village of Pinehurst/Southern Pines area with multiple sod wall bunkers and soon to come sod wall bunker cams, providing a live feed of bunker action straight to the Clubhouse for spectator enjoyment.



ORIGINAL GREENS DESIGN HONORED THROUGH METICULOUS RESTORATION

Greens were restored to the original Rees Jones 1991 design, resulting in a 20 percent larger putting surface, and the addition of generous 60-inch Tift Eagle Bermuda green collars. The new Champion Bermuda putting surfaces will provide significantly better playing conditions than its bent grass predecessor and will put Talamore’s greens on par with the other top courses in the area that have already made the switch to Bermuda greens including Pinehurst #2, #8, CCNC, Pine Needles, Mid Pines and Tobacco Road.

PLAYABILITY AND PACE OF PLAY ENHANCED. SUSTAINABILITY EMBRACED

The “New Course” feels and is bigger with the fairways opened up, limited rough and the removal of excessive bunkering, with 75% of all bunkers eliminated. Improved cart access and the reshaping of certain areas to help cart flow will increase pace of play by at least 30 minutes per round.



IT'S A WONDERFUL LIFESTYLE

Unparalleled Value. The Finest Clubs & the Best Amenities. The Most Relaxing Lifestyle.

Interested in relocating to an exceptional residential golf community for an unparalleled lifestyle with amenities including championship golf, pools, fitness, tennis, basketball, pickleball, ga-ga, shuffleboard, miles of nature trails and more?

No matter your lifestyle or real estate need, Talamore has it all.

Choose from a variety of real estate offerings:

- *Estate homes*
- *Homes for young families*
- *Townhouses and carriage homes*
- *Patio homes for retiree living*
- *Luxurious, low-maintenance lodges and golf villas*
- *The perfect lot for your future dream home*



As a Talamore property owner you enjoy a special Resident Social Club Membership program ONLY available to residents within our communities! We invite you to explore Talamore Golf Resort & the Mid South Club. Contact a Talamore real estate professional for a tour of our wonderful lifestyle.

For More information please contact:

Applecross

Pulte Homes
Patrick O'Brien
610-518-6363
patrick.o'brien@pulte.com

Talamore Mid South

Talamore Properties
Kim Strange
(910) 692-7207 ext. 26
Cell: (910) 315-9995
property@talamore.com

Talamore Country Club

Resale opportunities are
available at Talamore Country
Club in Ambler, PA.

Please contact your local
Montgomery County Real
Estate Agent for more details.



TRAVEL



The King's Mid South Gets a Champion Green Makeover

By Martin Armes, Contributing Writer

Arnold Palmer-designed Mid South Club near the Village of Pinehurst spearheads golf course restoration and greens conversion, along with other club enhancements. Part of the famed Talamore Golf Resort, Mid South's new greens are expected to be true rolling, fast and better conditioned year round.

Last summer, the green complexes at Talamore Golf Resort near the Village of Pinehurst were converted from bent grass to Champion Bermuda and have received rave reviews. Now, Talamore's partner property across the street at the Arnold Palmer designed Mid South Club is undergoing a similar golf course restoration and greens conversion, along with numerous other club enhancements. In all, these projects are among \$6 million in capital improvements at Talamore's four North Carolina and Pennsylvania facilities.

A quarter century after this renowned Sandhills resort first opened, the Talamore green complexes were restored last year to their original 1991 Rees Jones design by recapturing the greens surrounds, which had been heavily encroached by native Bermuda grasses. In addition to true rolling and lightening fast greens, the new strains of Bermuda are providing significantly better playing conditions year round.

Following up on the successful remastering at Talamore, the greens at Mid South Club are now being converted to Champion Bermuda. To ensure the design continuity of the putting contours, Mid South

and Talamore employ the "no till" method pioneered by Champion Turf Farms out of Texas. More than 700 courses nationwide have Champion Turf including Pinehurst No. 2.

As with the Talamore project last summer, Mid South will be working with Jeffrey Stein, Carlos Perez and the entire team at Shapemasters. Based in Southport, N.C., Shapemasters is one of just a handful of certified golf course builders. Shapemasters has worked with every modern era architect including Jack Nicklaus, Arnold Palmer, Rees Jones, Pete Dye, PB Dye, Greg Norman, Tom Fazio and more.

"We are excited to be working for the Talamore organization again this summer," said Jeffrey Stein, Shapemasters President and Founder. "The Mid South course is one of Arnie's best ever and will be greatly enhanced with new Champion greens. Green sizes will increase by 20 percent to as much as 40 percent and will change the way the course feels and plays — all for the better."

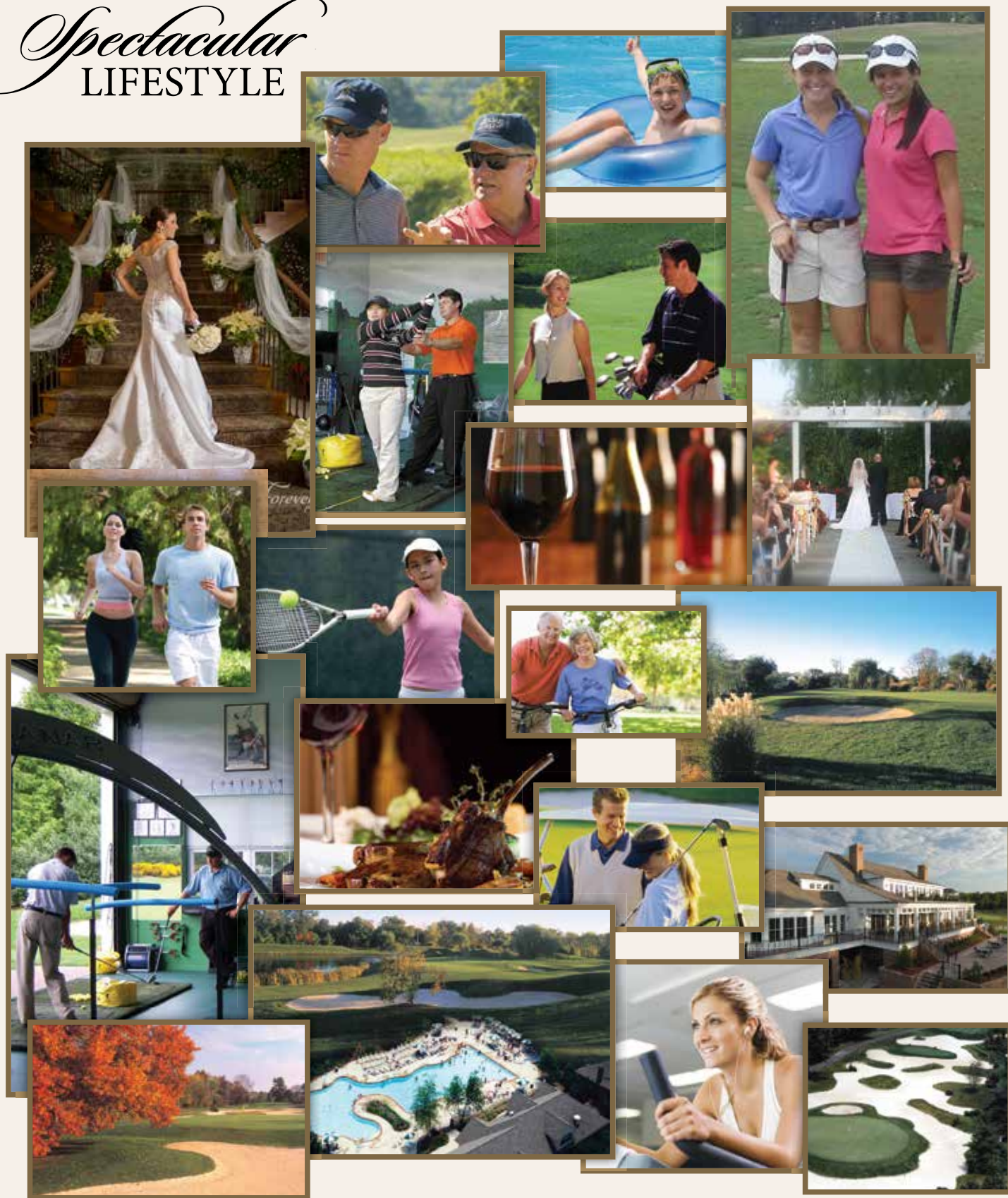
While the Mid South greens remodeling project is being conducted, the club will also add a new set of forward tees to many holes. These new tees promise to be a welcome addition to the golf course

and are expected to provide a more player friendly approach for those just learning the game — as well as those looking to move forward for a more enjoyable playing experience. Mid South is also busy improving the club's cart path system, with most areas are being removed and restored with a natural packed sand base. The paths will be re-concreted where necessary due to grade or traffic patterns.

Also in store for 2017 at Mid South are member facility upgrades to include the addition of basketball and pickle ball on one of the tennis courts, as well as a new barbecue and hospitality area at the Mid South pool. Matt Hausser, the Resort's General Manager and Brian Anderson the Mid South Head Golf Professional are also rolling out a plethora of new Member events for 2017 — both on and off the course. "Many new events and services were added in 2016," said Hausser. "All the events and camaraderie were well received. We want to keep the momentum going and for 2017 will be enhancing the Member calendar with new themes and activities."

For information call (800) 552-6292 or visit www.TalamoreGolfResort.com for the latest golf package information. TSG

Spectacular LIFESTYLE



Membership Information

Steve Natalie - Applecross Membership Director - 484-692-1010, x110 - steve@applecrosscc.com

John Bryers - Talamore Membership Director - 215-641-1300, x127 - john.bryers@talamorefamily.com

www.ApplecrossCC.com • www.TalamoreCC.com